

# The Peer2Peer Project

## *Sustaining Meaningful Engagement of PWLLE in Overdose Response Settings*



# Land Acknowledgement

---

We respectfully acknowledge that we live and work on the unceded traditional territory of the Coast Salish Peoples, including the traditional territories of x<sup>w</sup>məθkwəyəm (Musqueam), Skwxw̓u7mesh (Squamish), Səl̓i lwətał (TsleilWaututh) peoples.



University  
of Victoria

Canadian Institute for  
Substance Use Research



Health  
Canada

# Introductions



toward  
THE heart.com  
BCDC HARM REDUCTION SERVICES

BC  
BC Centre for Disease Control  
An agency of the Provincial Health Services Authority



University of Victoria | Canadian Institute for  
Substance Use Research



raincity  
HOUSING

Health  
Canada

# About the Peer2Peer Project and Development of the Intervention



toward  
THE heart.com  
BCDC HARM REDUCTION SERVICES

BC  
BC Centre for Disease Control  
An agency of the Provincial Health Services Authority



University  
of Victoria

Canadian Institute for  
Substance Use Research



raincity  
HOUSING



Health  
Canada

# Background

---

- Working in overdose response settings → lasting social, mental and emotional impacts.
- Peer workers face ↑ stress
- Peer workers lack organizational and mental health supports.



# Peer-2-Peer Project (P2P)

---

Funded by Health Canada

**Aim:** Develop, implement and evaluate peer-led support interventions for peer workers who are working in BC Overdose Response Environments.



More info:

<https://towardtheheart.com/resource/p2p-project-summary/open>



# Needs Assessment Findings

---

Better Working  
Conditions



Recognition



Improved Living  
Conditions



More Workplace  
Resources



Equitable Pay



Community  
Resource Awareness



Skill Development



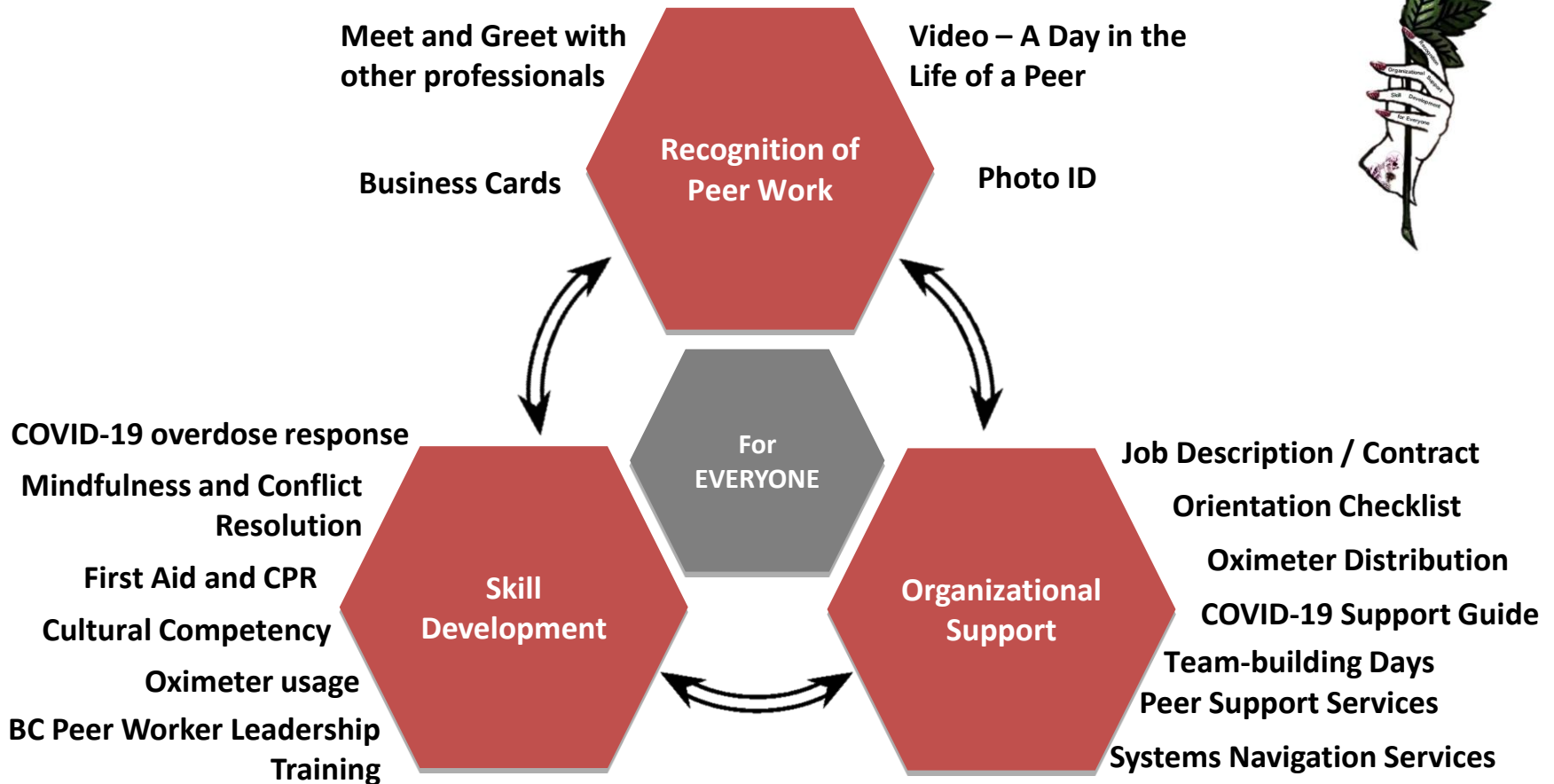
Peer Debriefing



Art/ Music and  
Physical Activities



# The ROSE Model



More info: <https://towardtheheart.com/resource/about-rose/open>

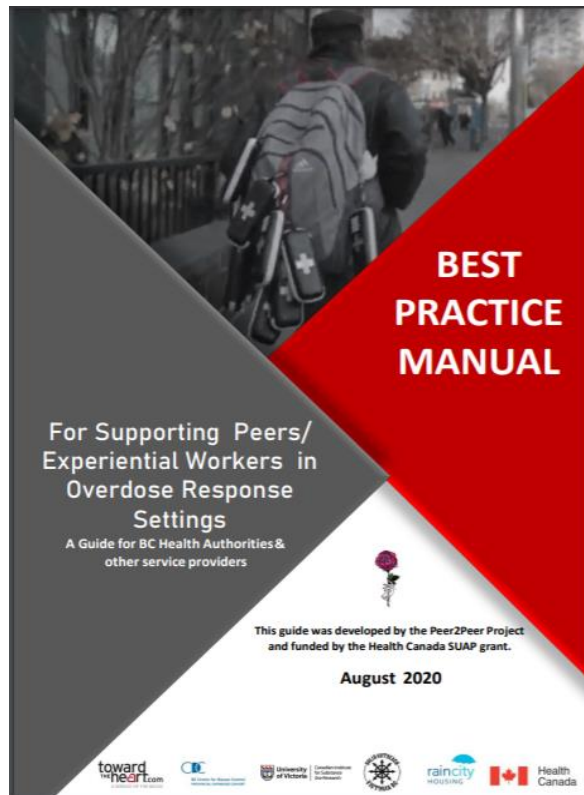




Short version: [https://www.youtube.com/watch?v=Ed\\_5QRYXTSc](https://www.youtube.com/watch?v=Ed_5QRYXTSc)

Long version: <https://www.youtube.com/watch?v=XcMBpGJqwGU>

# Best Practice Manual



## Table of Contents

Acknowledgements.....	3
Glossary Of Terms & Abbreviations.....	4
About The Peer2Peer Project.....	5
Peer2Peer Needs Assessment Summary.....	7
The ROSE Initiative.....	8
RECOGNITION: Photo ID & Business Cards.....	9
Photo ID Template.....	10
Business Card Template.....	11
ORGANIZATIONAL SUPPORT: Job Descriptions And Contracts For Peers/ Experiential Workers.....	13
Community Outreach Worker - Job Description.....	14
Community Outreach Worker - Employment Contract.....	17
ORGANIZATIONAL SUPPORT: Orientation Guidelines.....	24
New Peer/Experiential Worker Orientation Checklist.....	25
ORGANIZATIONAL SUPPORT: Assistance With Living Conditions.....	28
Systems Navigator – Job Description.....	29
ORGANIZATIONAL SUPPORT: Peer-to-Peer Debriefing.....	32
Peer Support Worker – Job Description.....	33
Conclusion.....	35
References.....	36
Index.....	37

More info: <https://towardtheheart.com/resource/supporting-peers-experiential-workers-in-overdose-response-settings/open>. For editable versions, email [harmreduction@bccdc.ca](mailto:harmreduction@bccdc.ca)

# BC Peer Worker Leadership Training



## Module 1: Recognizing Mental Health Disorders

Launch Training

### RESOURCES

- Module 1 Summary Handout: Responding to Emergency Situations with Mental Health Disorders



## Module 2: Effective Communication

Launch Training

### RESOURCES

- Language Matters Poster
- Common & Clinical Language Guide
- Module 2 Summary Handout - Effective Communication



## Module 3: Peer-to-Peer Counselling Skills

Launch Training

### RESOURCES

- Module 3 Summary Handout - Counselling Skills



## Module 4: Conflict Resolution

Launch Training

### RESOURCES

- Module 4 Summary Handout - Conflict Resolution

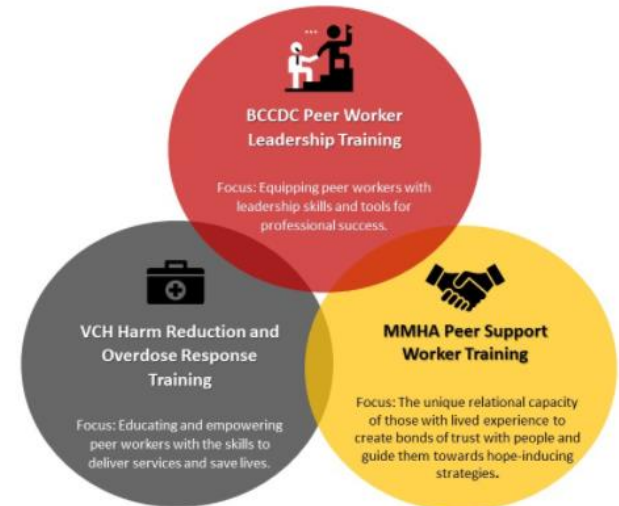


## Module 5: Organizational Etiquette

Launch Training

### RESOURCES

- Module 5 Summary Handout - Organizational Etiquette



More info: <https://towardtheheart.com/peer-worker-training>

# Compassionate Action: Anti-Stigma Campaign



People Who Use Substances and Employment



Hierarchies of Perceived Acceptable Substances and...



Peers Workers' Interactions with Other Professionals



People Who Use Drugs and Primary Care



Inequity Faced by Peers/Experiential Workers ...



Scroll to the bottom of:  
<https://towardtheheart.com/peer2peer-project>

# Partnerships and Collaboration with other projects



# Implementation and Impact of the Interventions



# Q&A





Peers song: <https://www.youtube.com/watch?v=sZjKsqZyhbq>



# Evaluations



# Evaluation – Quantitative

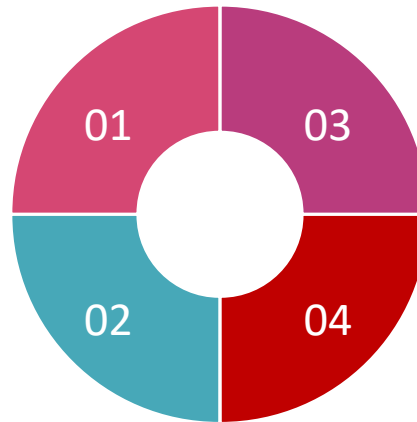


## Respect and Recognition at Work

More peers feel appreciated at work

## Deriving Meaning from Work

Peers are more satisfied with their work, and feel good about the people they are helping



## Relationships and Support Network

Peers feel more connected, have more trusting relationships, and like their coworkers more



## Stressors

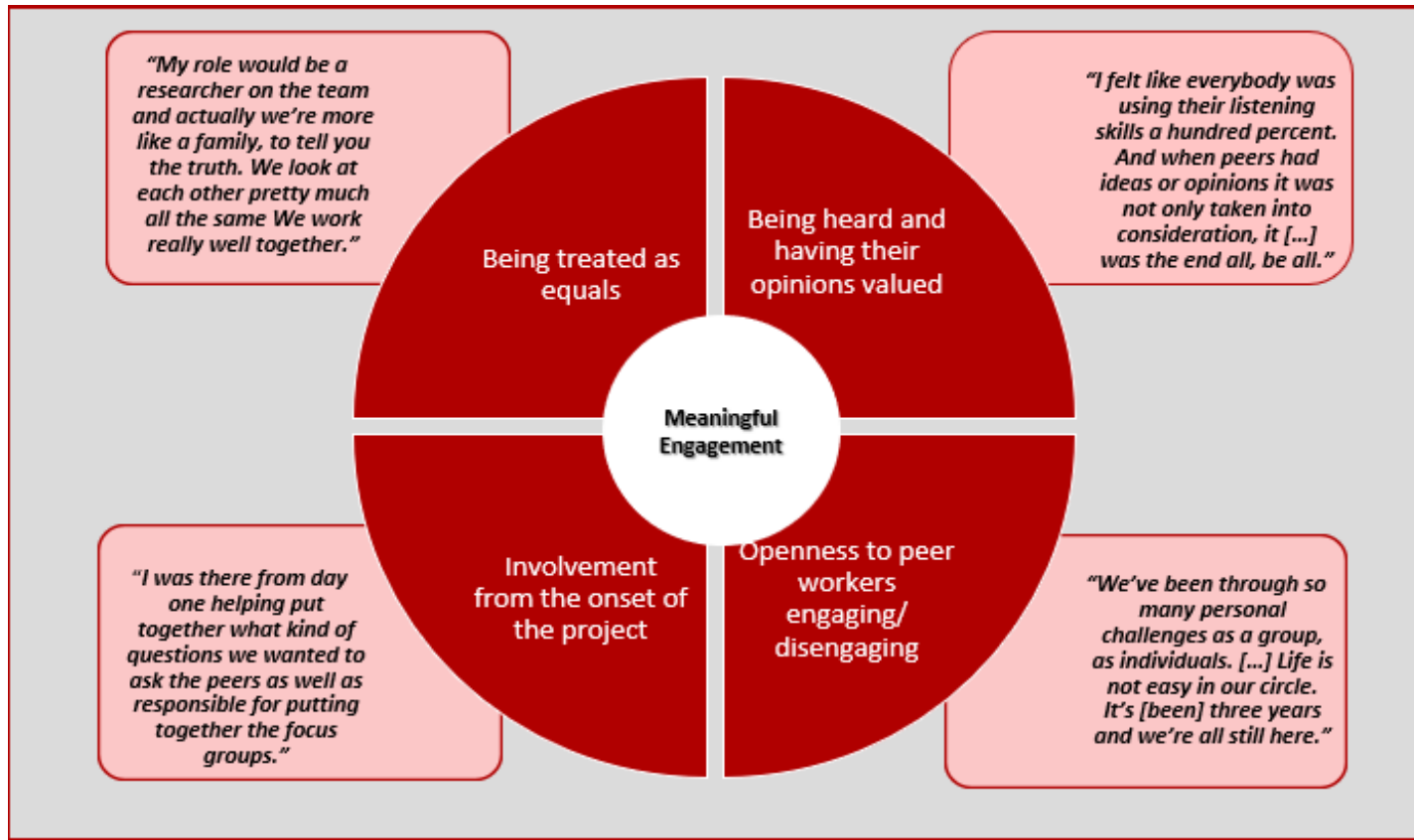
The number of peers who are stressed about their work situation has decreased



Full report:

<https://towardtheheart.com/resource/quantitative-evaluation-of-the-peer2peer-project-/open>

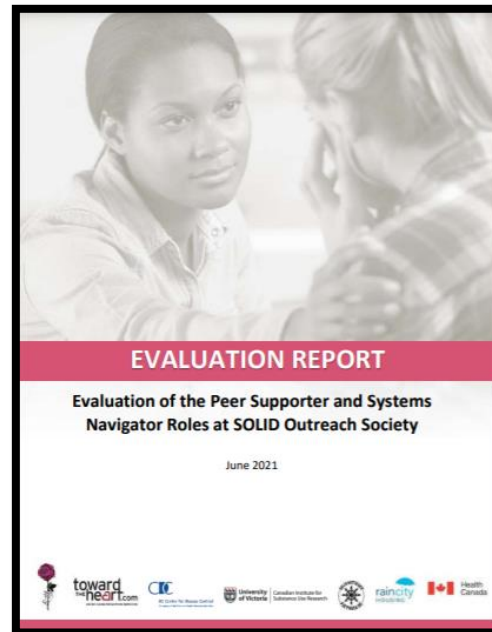
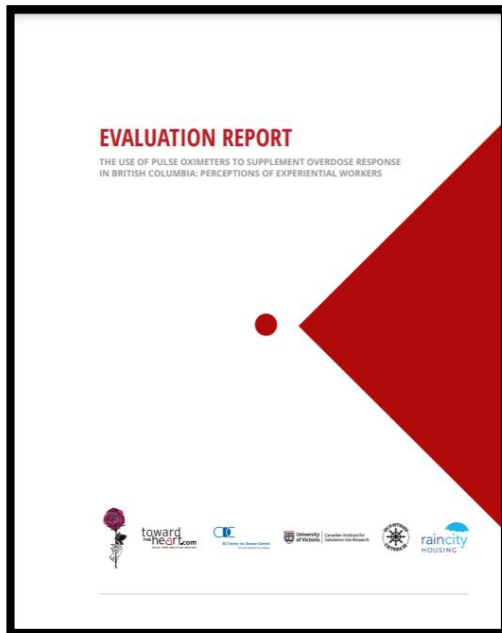
# Evaluation – Qualitative



Full report:

<https://towardtheheart.com/resource/evaluation-of-peer-engagement-p2p-project/open>

# Evaluation – Specific Strategies



### Evaluation of the Peer Worker Leadership Training

The Peer Worker Leadership Training is one of the three sections of the BC Peer Worker Training Curriculum designed to deliver uniform educational resources that are accessible across the province, evidence-based, and informed by the lived and living experiences of people who use substances.

This component of the training was designed by the Peer2Peer Project at the BC Centre for Disease Control, in collaboration with Peer Research Assistants at RainCity Housing and SOLID Outreach Society. The training modules center the voices and experiences of peer workers and have been developed for and by peer workers in BC. The Peer Worker Leadership Training focuses on equipping peer workers with leadership skills and tools for professional success.

**323 Surveys Completed**

An evaluation survey has been embedded in the online training. This report is based on the results from the 323 surveys completed by November 1, 2021. These numbers may be an under-estimate for the actual participants because: 1) The survey was embedded in the training modules a few months after the first few modules were available online. 2) Participants have the option to skip over the evaluation survey.

**Training Format and Platform**

Over time, the proportion of participants that find the online training platform effective has increased. Peer Research Assistants indicate that the online training platform is effective for shorter trainings. This would explain why some of the participants for Modules 1 and 2 (3% and 4% respectively) found the online platform ineffective since those were the two longest modules.

**Length and Amount of Information**

The phrases on the evaluation form related to amount of information and length of modules were negatively worded so "Disagree/ Strongly Disagree" were the favourable responses. Even though the length of the training modules decreased over time, a higher proportion of participants from Modules 3 - 5 indicated that too much information was presented and/or that the training was too long. This may be a result of some sites that conducted in-person trainings showing two trainings in the same day, resulting in an overall long day for the participants.

The training consists of five online modules which were developed and made available online:

- Module 1: Recognizing Mental Health Disorders
- Module 2: Effective Communication in Peer Work
- Module 3: Peer-to-Peer Counselling Skills
- Module 4: Conflict Resolution
- Module 5: Organizational Etiquette for Peer Work

**Participant Feedback:**

- "The 'click on for more...' was great"
- "I liked that it can be taken at my own time"
- "Self-paced"
- "Audio-learning style, not have to read it myself"
- "I was reading faster than the voice over"
- "You can't save progress and return to it later"
- "No handout to take home"
- "92-98% agreed or strongly agreed that the online training platform was effective."
- "To the point and factual"
- "It was easy to follow yet held our attention"
- "The animation makes it easy to watch/ understand for all levels of education"
- "Too much information"
- "It was a tad bit too long"

	The amount of information presented was too much			The training was too long		
M5	30%	34%	37%	23%	31%	34%
M4	34%	34%	32%	32%	38%	30%
M3	24%	18%	33%	26%	37%	37%
M2	12%	28%	61%	18%	23%	61%
M1	16%	16%	70%	10%	25%	65%

0% 25% 50% 75% 100% 0% 25% 50% 75% 100%

Strongly agree/agree Neither agree or disagree Strongly disagree/Disagree

Visit:  
<https://towardtheheart.com/peer2peer-project> under  
 Evaluations

# Publications and Other KT

---

**20**

**Presentations**

**30+**

**Resources**

**5**

**Journal  
Publications**



# Discussion and Next Steps

---

- How does this fit with what you're doing?
- How could you use these supports/ resources [see Resource Menu].
- What can we do to support you/ how can we tailor it for your needs?
- Who else can we share with?



# Conclusion

---

- The resources created through the Peer2Peer Project hold much promise improving working conditions for peer workers, but much work remains to be done.
- It is the collective responsibility of all service providers involved in harm reduction work to provide supports and improve the experience of people who use substances



# Acknowledgements

---

We would like to recognize the hard work of our *Research Teams* in the Lower Mainland and Victoria!

## **Solid Outreach**

Mike Knott

Fred Cameron

## **Academic Team**

Dr. Jane Buxton

Dr. Bernie Pauly

Zahra Mamdani

## **Raincity Housing**

Rayne Voyer

Mat Savage

Jessica van Norren

Tracy Scott

**Past team members:** Amy Howell, Denice Edwards, Donnie Daignault, Hailly Wagner, Jennifer Conway-Brown, Jonathan Orr, Lacey Mesley, Lindsay Shaw, Michael Joyal, Paige Phillips, Peter Woodrow, Ryan Seguin, & Sophie McKenzie.





# THANK YOU!

---



toward  
THE heart.com  
BCDC HARM REDUCTION SERVICES

BC  
BC Centre for Disease Control  
An agency of the Provincial Health Services Authority



University  
of Victoria

Canadian Institute for  
Substance Use Research



raincity  
HOUSING



Health  
Canada